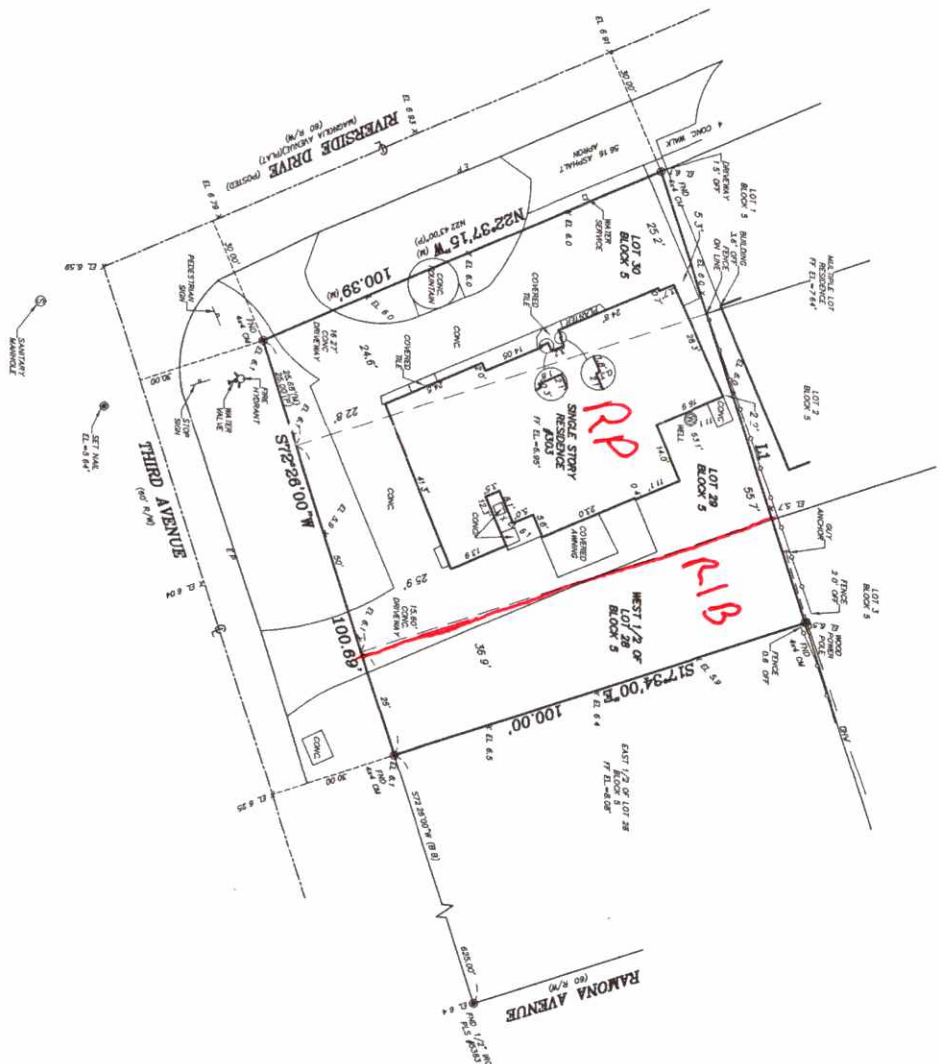


303 N. Riverside - Zoning Split

LINE TABLE		
LINE	BEARING	LENGTH
L1	N72°26'00"E	109.53



# AAL LAND SURVEYING SERVICES, INC.

BOUNDARY SURVEY

SCALE 1" = 20'

SECTION 16

TOWNSHIP 37 S

RANGE 17 E

PROJECT #49601

DATE 04-15-24

PHONE (321) 788-9110 FAX (321) 855-8771 E-MAIL [info@aal-surveying.com](mailto:info@aal-surveying.com)

ARTHUR W. ROSS PLS. No. 5387

DANIEL D. GARNER PLS. No. 6180

- PROJECT DESCRIPTION
- 3.5' LOT BASED SURVEY
- 5.72' (NAD 83)
- EL. 714 (MAD 20)
- (1) - QUALITY OF SURVEYING
  - (2) - QUALITY OF SURVEYING
  - (3) - QUALITY OF SURVEYING
  - (4) - QUALITY OF SURVEYING
  - (5) - QUALITY OF SURVEYING
  - (6) - QUALITY OF SURVEYING
  - (7) - QUALITY OF SURVEYING
  - (8) - QUALITY OF SURVEYING
  - (9) - QUALITY OF SURVEYING
  - (10) - QUALITY OF SURVEYING
  - (11) - QUALITY OF SURVEYING
  - (12) - QUALITY OF SURVEYING
  - (13) - QUALITY OF SURVEYING
  - (14) - QUALITY OF SURVEYING
  - (15) - QUALITY OF SURVEYING
  - (16) - QUALITY OF SURVEYING
  - (17) - QUALITY OF SURVEYING
  - (18) - QUALITY OF SURVEYING
  - (19) - QUALITY OF SURVEYING
  - (20) - QUALITY OF SURVEYING
  - (21) - QUALITY OF SURVEYING
  - (22) - QUALITY OF SURVEYING
  - (23) - QUALITY OF SURVEYING
  - (24) - QUALITY OF SURVEYING
  - (25) - QUALITY OF SURVEYING
  - (26) - QUALITY OF SURVEYING
  - (27) - QUALITY OF SURVEYING
  - (28) - QUALITY OF SURVEYING
  - (29) - QUALITY OF SURVEYING
  - (30) - QUALITY OF SURVEYING
  - (31) - QUALITY OF SURVEYING
  - (32) - QUALITY OF SURVEYING
  - (33) - QUALITY OF SURVEYING
  - (34) - QUALITY OF SURVEYING
  - (35) - QUALITY OF SURVEYING
  - (36) - QUALITY OF SURVEYING
  - (37) - QUALITY OF SURVEYING
  - (38) - QUALITY OF SURVEYING
  - (39) - QUALITY OF SURVEYING
  - (40) - QUALITY OF SURVEYING
  - (41) - QUALITY OF SURVEYING
  - (42) - QUALITY OF SURVEYING
  - (43) - QUALITY OF SURVEYING
  - (44) - QUALITY OF SURVEYING
  - (45) - QUALITY OF SURVEYING
  - (46) - QUALITY OF SURVEYING
  - (47) - QUALITY OF SURVEYING
  - (48) - QUALITY OF SURVEYING
  - (49) - QUALITY OF SURVEYING
  - (50) - QUALITY OF SURVEYING
  - (51) - QUALITY OF SURVEYING
  - (52) - QUALITY OF SURVEYING
  - (53) - QUALITY OF SURVEYING
  - (54) - QUALITY OF SURVEYING
  - (55) - QUALITY OF SURVEYING
  - (56) - QUALITY OF SURVEYING
  - (57) - QUALITY OF SURVEYING
  - (58) - QUALITY OF SURVEYING
  - (59) - QUALITY OF SURVEYING
  - (60) - QUALITY OF SURVEYING
  - (61) - QUALITY OF SURVEYING
  - (62) - QUALITY OF SURVEYING
  - (63) - QUALITY OF SURVEYING
  - (64) - QUALITY OF SURVEYING
  - (65) - QUALITY OF SURVEYING
  - (66) - QUALITY OF SURVEYING
  - (67) - QUALITY OF SURVEYING
  - (68) - QUALITY OF SURVEYING
  - (69) - QUALITY OF SURVEYING
  - (70) - QUALITY OF SURVEYING
  - (71) - QUALITY OF SURVEYING
  - (72) - QUALITY OF SURVEYING
  - (73) - QUALITY OF SURVEYING
  - (74) - QUALITY OF SURVEYING
  - (75) - QUALITY OF SURVEYING
  - (76) - QUALITY OF SURVEYING
  - (77) - QUALITY OF SURVEYING
  - (78) - QUALITY OF SURVEYING
  - (79) - QUALITY OF SURVEYING
  - (80) - QUALITY OF SURVEYING
  - (81) - QUALITY OF SURVEYING
  - (82) - QUALITY OF SURVEYING
  - (83) - QUALITY OF SURVEYING
  - (84) - QUALITY OF SURVEYING
  - (85) - QUALITY OF SURVEYING
  - (86) - QUALITY OF SURVEYING
  - (87) - QUALITY OF SURVEYING
  - (88) - QUALITY OF SURVEYING
  - (89) - QUALITY OF SURVEYING
  - (90) - QUALITY OF SURVEYING
  - (91) - QUALITY OF SURVEYING
  - (92) - QUALITY OF SURVEYING
  - (93) - QUALITY OF SURVEYING
  - (94) - QUALITY OF SURVEYING
  - (95) - QUALITY OF SURVEYING
  - (96) - QUALITY OF SURVEYING
  - (97) - QUALITY OF SURVEYING
  - (98) - QUALITY OF SURVEYING
  - (99) - QUALITY OF SURVEYING
  - (100) - QUALITY OF SURVEYING

SURVEY PREPARED FOR:  
BROOKSIDE DEVELOPMENT, LLC

DESCRIPTION: LOTS 35, 36 AND W. 1/2 OF LOT 28, BLOCK 5, PLAT OF INDALANTINE BY THE SEA, ACCORDING TO THE PLAT THEREON, AS RECORDED IN PLAT BOOK 5, PAGE 35, OF THE PUBLIC RECORDS OF BREVARD COUNTY, FLORIDA.